

COVID-19 Vaccine

Prevention, Enforcement,
and Labour Law



M manufacturing
Safety Alliance of BC



**FOOD &
BEVERAGE**



Lisa McGuire

Chief Executive Officer
Manufacturing Safety Alliance of BC



manufacturing
Safety Alliance of BC

About the Alliance

The Manufacturing Safety Alliance of BC is the nonprofit health and safety association for BC manufacturers and food processors.

More than 3,000 employers use our Alliance online and classroom training and confidential advisory services to build workplace health and safety programs and protect workers.



Certifying Partner
for the Occupational
Safety Standard of
Excellence *COR for
BC Manufacturers*



manufacturing
Safety Alliance of BC

COVID-19 Vaccine

Prevention, Enforcement,
and Labour Law



M manufacturing
Safety Alliance of BC



**FOOD &
BEVERAGE**

Dr. Monika Naus

Medical Director,
Communicable Diseases
and Immunization Service,
BC Centre for Disease
Control



Chris Back

Director OHS Consultation
and Education Services,
WorkSafeBC



Preston Parsons

Partner, Overholt Law





BC Centre for Disease Control
Provincial Health Services Authority

COVID-19 Vaccine: Prevention, Enforcement, and Labour Law

February 9 2021

Manufacturing Safety Alliance of BC

BC COVID-19 vaccine planning: Future state with vaccines now available



Monika Naus MD MHS Sc FRCPC FACPM

Medical Director

Communicable Diseases & Immunization Service

Professor, School of Population and Public Health, UBC

Canada's 7 supply agreements

Manufacturer	Candidate Vaccine	Vaccine Platform	Dosing Schedule	No. of doses (millions)	Storage temp.
Pfizer BioNTech (approved)	BNT162	mRNA	2 doses/21 days	Up to 76	-75°C
Moderna (approved)	mRNA-1273		2 doses/28 days	40	-20°C
AstraZeneca	AZD1222	Replication defective simian viral vector	2 doses/21 days	20	2-8°C
Johnson and Johnson (Janssen)	Ad26.COVS.2	Replication defective viral vector	1 dose	Up to 38	2-8°C
Novavax	NVX-CoV2373	Protein subunit	2 doses/21 days	Up to 76	2-8°C
Sanofi Pasteur/GSK	S protein (baculovirus production) adjuvant	Protein subunit	2 doses/28 days	Up to 72	2-8°C
Medicago	CoVLP with GSK adjuvant	Virus Like Particle	2 doses/21 days	Up to 76	TBD

Clinical Trials

Clinical trials (studies in people) are next to see if the vaccine is safe and works.
These studies have 3 phases (stages).



People taking part in these studies are volunteers.



The volunteers understand that a vaccine is being studied and are informed about the possible side effects.



If a vaccine is being made for children, it is tested on adults first.

PHASE 1



10 - < 100 volunteers
(healthy adults)



Is the vaccine safe?



Does it appear to work?

PHASE 2



50 - 500 volunteers
(target population, e.g. children)

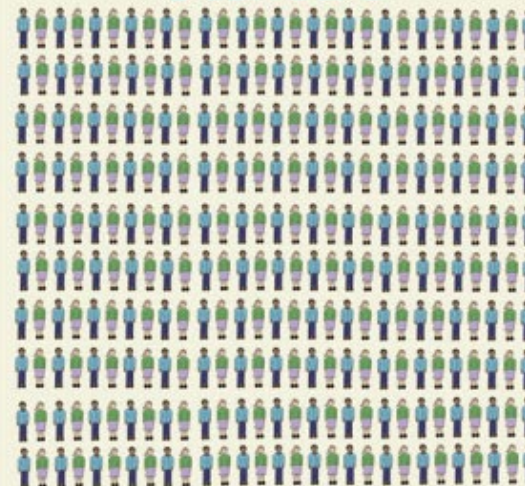


Is the vaccine safe?



What is the best dose and schedule?

PHASE 3



300 - 30 000 volunteers
(target population, e.g. children)



Is the vaccine safe?



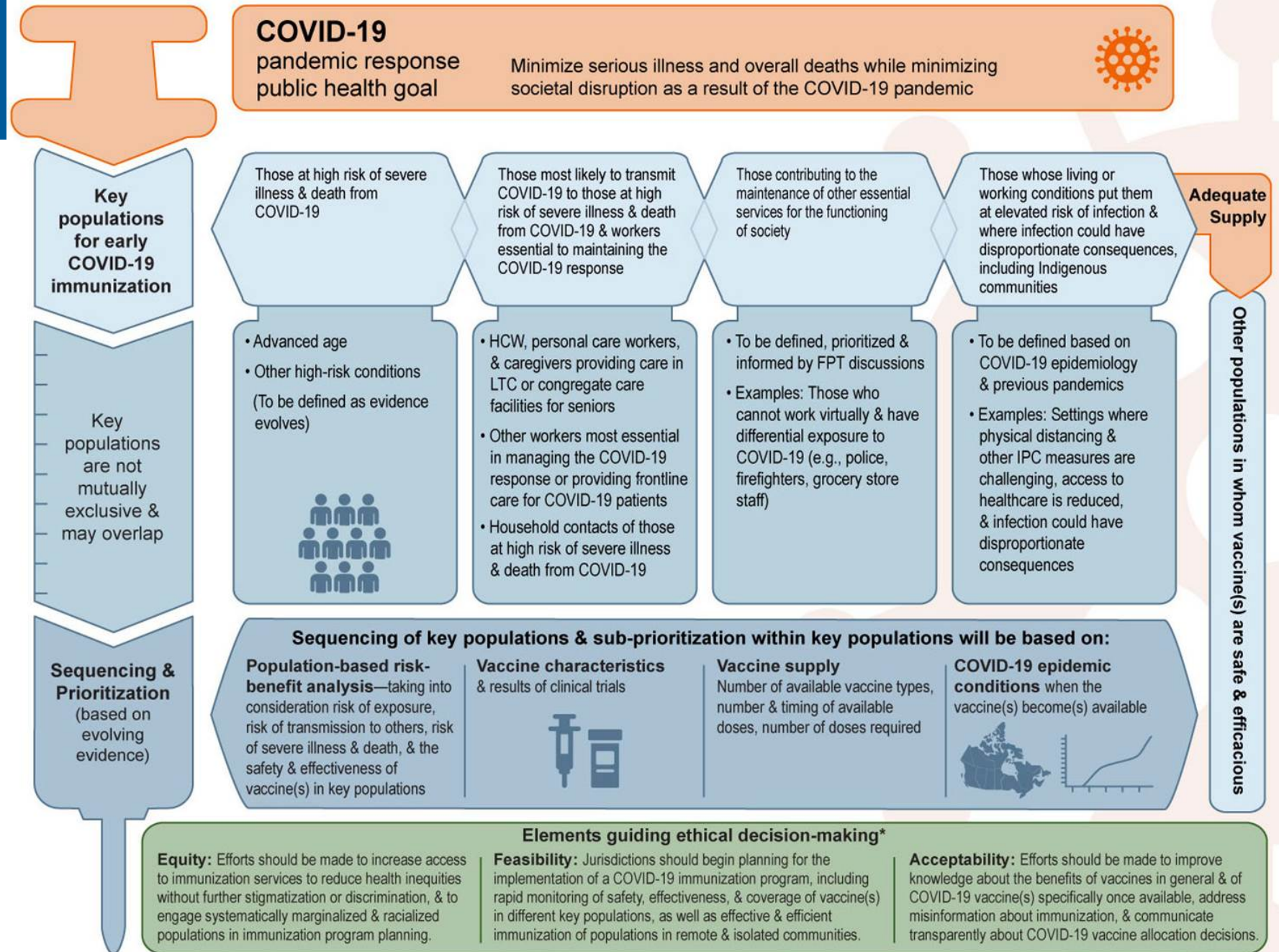
Does it work?

COVID-19 mRNA vaccine efficacy and safety

- Vaccine efficacy (ability to prevent laboratory confirmed symptomatic COVID-19 infection):
 - Pfizer 95%
 - Moderna 94.1%
- Safety:
 - Well tolerated
 - Local reactions at the injection site
 - Systemic symptoms such as headache, muscle aches, fever; most mild; begin 1-2 days after vaccine and resolved within 1-2 days
 - No emerging safety signals in postmarketing surveillance

From: NACI statement
December 2020 on
[Guidance on the
prioritization of initial doses
of COVID-19 vaccine\(s\)](#)

Considerations of:
Ethics
Equity
Feasibility
Acceptability



*based on the systematic assessment of ethics, equity, feasibility and acceptability using an evidence-informed framework, available at: <https://doi.org/10.1016/j.vaccine.2020.05.051>

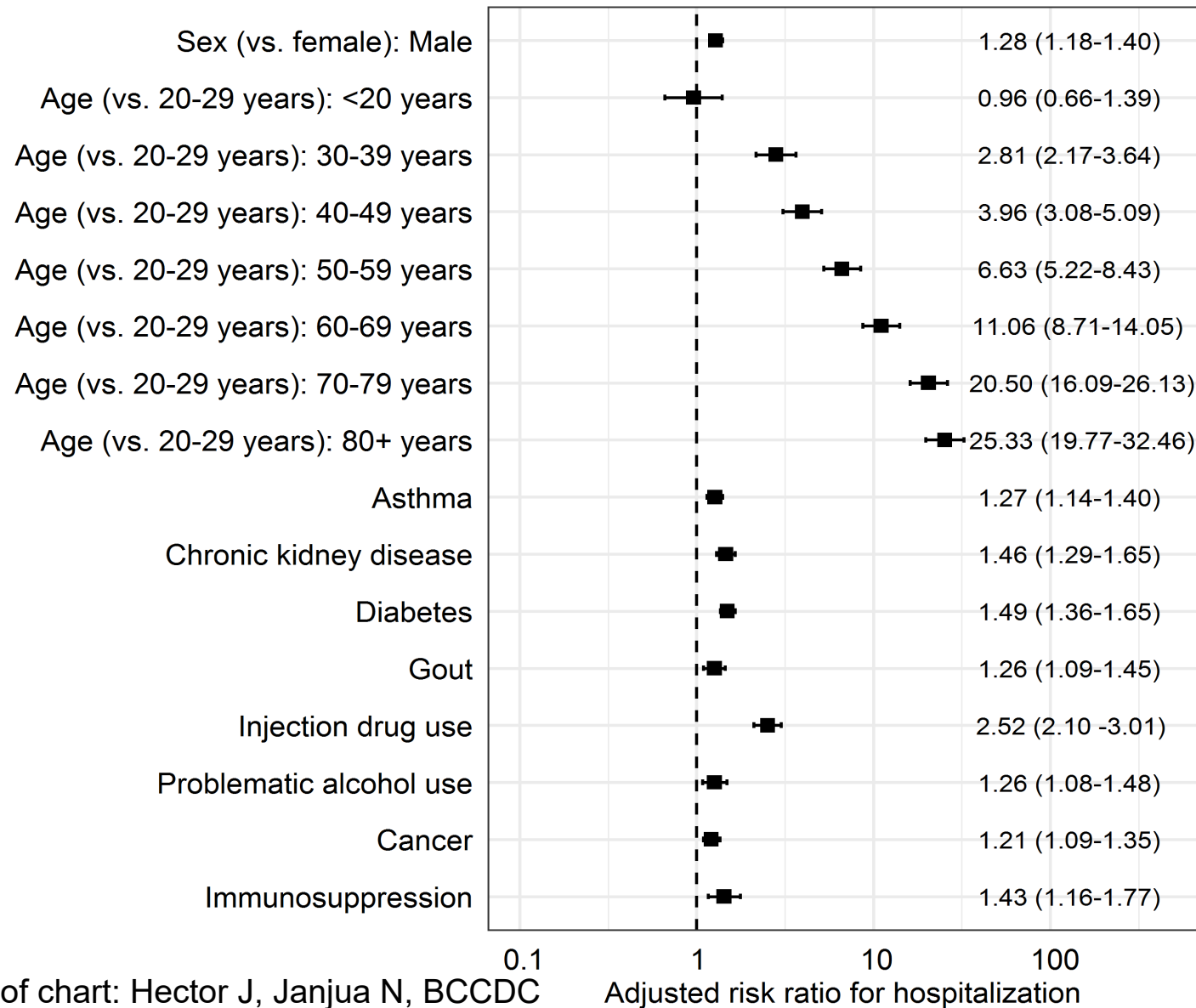
BC analysis of COVID case data linked to administrative data sets

2,075 hospitalized; 48,288 non-hospitalized

RISK OF HOSPITALIZATION

Age is the strongest risk factor for severe illness

This has been observed in all jurisdictions
 Addresses prevalence of comorbidities which increases by age
 Seen at all age groups against reference 20-29 year olds
 Facilitates validation of criterion based eligibility in all immunization settings, unlike 'essential services' or underlying medical conditions



COVID-19 vaccine roll-out plan for British Columbia

Phase 1 + Dec 2020 to Feb 2021	Phase 2 Feb to Mar 2021	Phase 3 April to June 2021	Phase 4 July to Sept 2021
High-Risk Population		General Population	
<ul style="list-style-type: none"> Residents, staff, and essential visitors to long-term care and assisted living Individuals assessed for and awaiting long-term care Hospital health care workers who may provide care for COVID-19 patients Remote and isolated Indigenous communities 	<ul style="list-style-type: none"> Seniors aged 80+ who are not yet immunized Indigenous seniors aged 65+, Elders, and additional communities not yet immunized Hospital staff, community GPs and medical specialists not yet immunized Vulnerable populations in select congregated settings Staff in community home support and nursing for seniors 	People aged 79 to 60, in five-year increments: <ul style="list-style-type: none"> 79 to 75 74 to 70 69 to 65 64 to 60 People aged 69 to 16 who are clinically extremely vulnerable 	People aged 59 to 18, in five-year increments: <ul style="list-style-type: none"> 59 to 55 54 to 50 49 to 45 44 to 40 39 to 35 34 to 30 29 to 25 24 to 18
Once additional vaccines are approved and become available, people between the ages of 18 and 64 who are front-line essential workers or work in specific workplaces or industries may be included in the later part of Phase 3.			

The timeline for BC's COVID-19 Immunization Plan may change based on vaccine availability. Information last updated: January 19, 2021.

Vaccine supply for BC – Q1 and Q2, 2021

Vaccine	Q1 doses
Pfizer	543,075
Moderna	249,700
Total	792,775

Notes:

- Estimated quantities based on information from Public Health Agency of Canada.
- Quantities include requirements for 2nd dose, recommended at 35 days (currently out to 42 days because vaccine supply situation) after 1st dose.

Estimated Q2 supply for Canada:

BC's allocation approx. 13.3%; range 2.43 to 4.97 million doses



Recommendations/considerations for employers around control of transmission throughout the rollout

- Immunization will ramp up as the months progress
- Prevention of transmission will need to be maintained
- By September all adults will have been offered vaccine
- Uptake of the vaccine will be assessed
- Every expectation that rates of COVID-19 will decline dramatically
- Every hope that 'life will return to normal'

Benefits of immunization record and its use

COVID-19 Immunization Record Card

This is a permanent record. Keep in a safe place.

For more information about COVID-19 immunization, talk to your health care provider or visit www.bccdc.ca/covid19vaccine



BRITISH
COLUMBIA

ImmunizeBC

Q+A



Chris Back
WorkSafeBC



Dr. Monika Naus
BCCDC



Lisa McGuire
Manufacturing Safety Alliance of BC



Preston Parsons
Overholt Law



manufacturing
Safety Alliance of BC

safetyalliancebc.ca/covid-19



manufacturing
Safety Alliance of BC



More resources

- COVID-19 Safety Assessment
- COVID-19 News & Resources
- On-Demand Webinars

OHS Support Line

604.795.9595

Safety Excellence Awards

Nominations Now Open

safetyalliancebc.ca/safety-excellence-awards



manufacturing
Safety Alliance of BC

Thank you

OHS Support Line **604.795.9595**
manufacturing@safetyalliancebc.ca



M manufacturing
Safety Alliance of BC



**FOOD &
BEVERAGE**