



DAY 3 - 12:45PM-1:30PM PDT

PREVENTION 101:

HAND TOOL SAFETY

MIS
MAKE IT SAFE



Hand Tool Awareness



Disclaimer

- This session is only for awareness and discussion purposes only
- This session does NOT qualify you to operate hand tools
- Participants are encouraged to take specific hand tool training that meets the Occupational Health and Safety Regulation requirements and other legal requirements



Definitions



Hand Tool



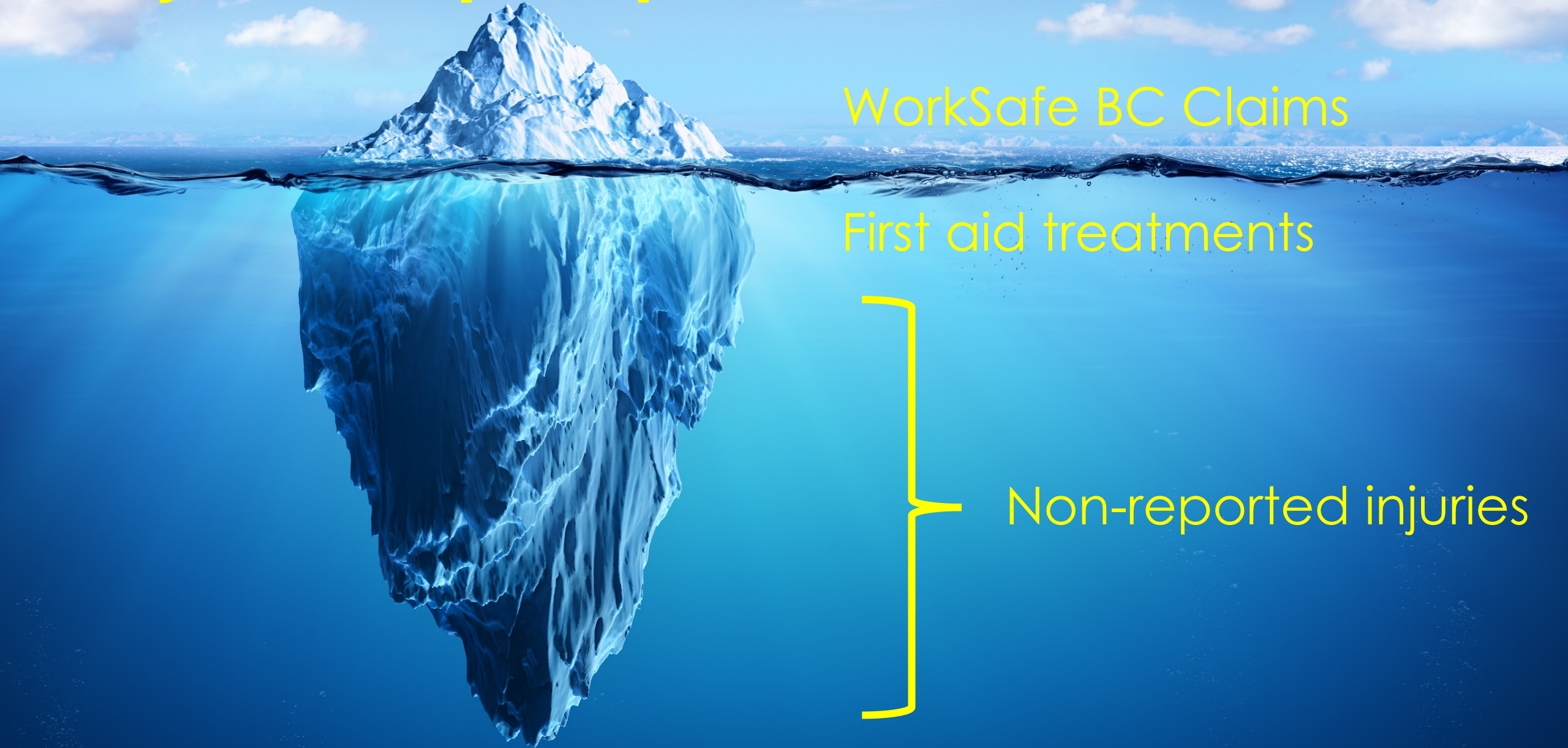
Hand Powered Tool

Why is this topic important?

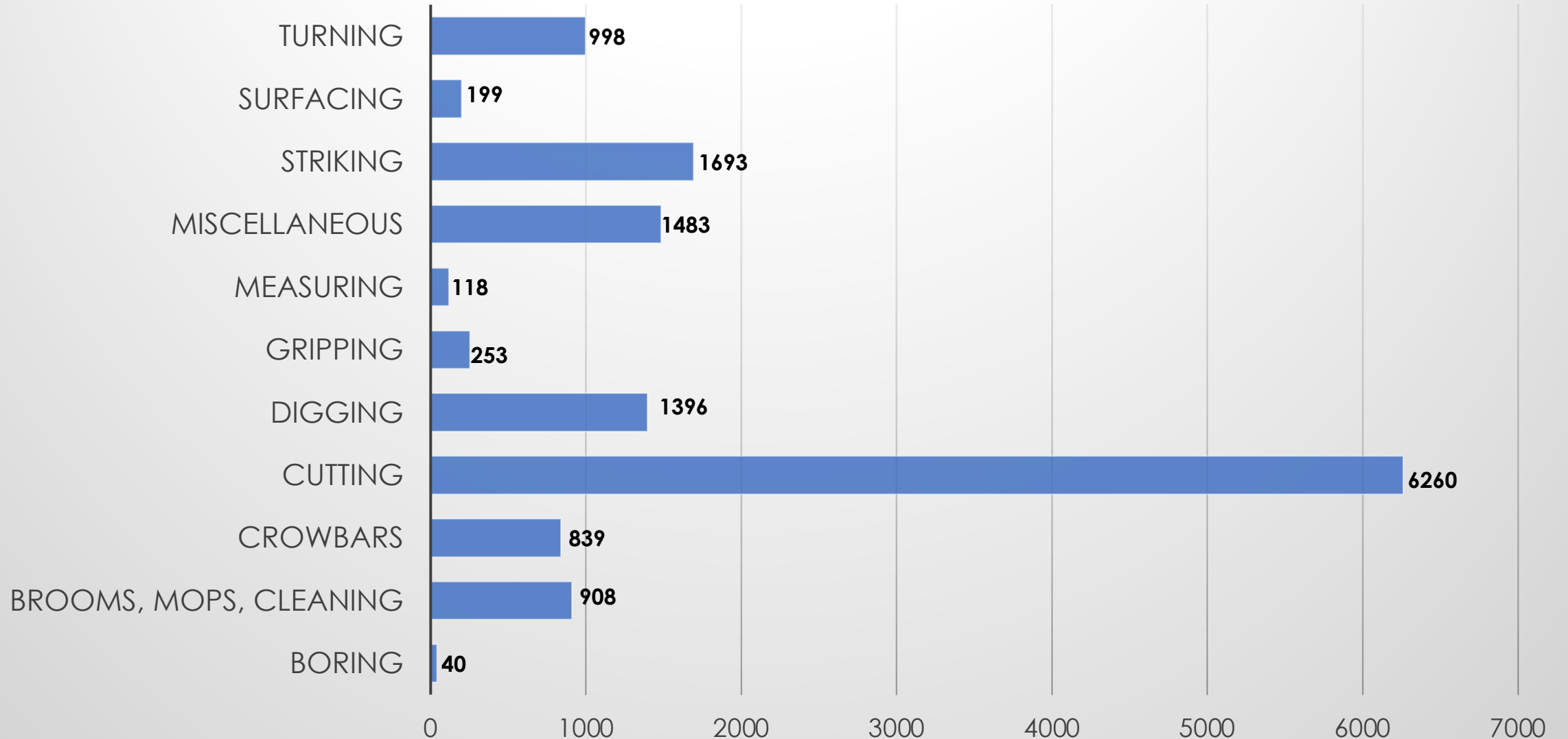
WorkSafe BC Claims

First aid treatments

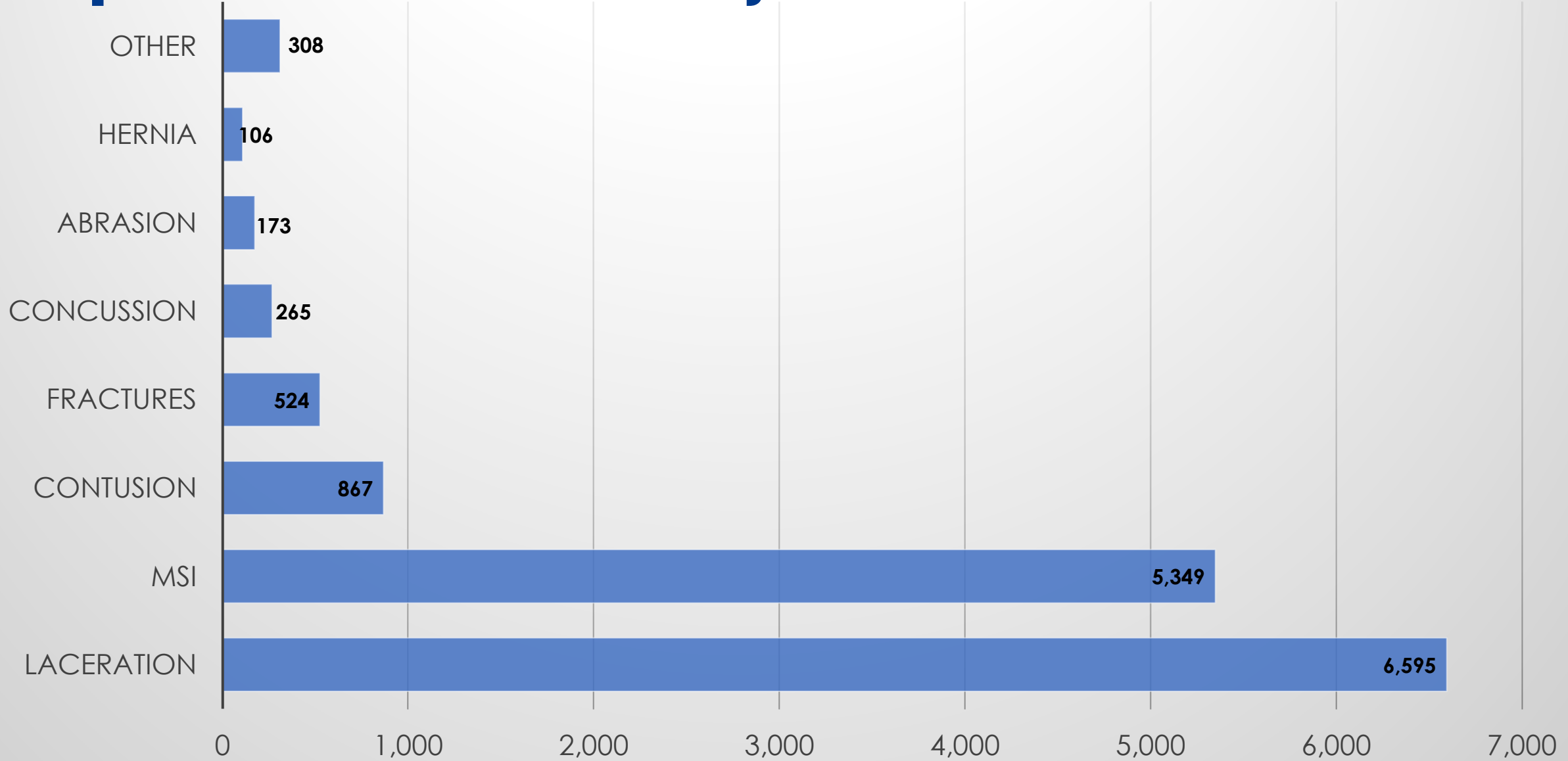
Non-reported injuries



Non powered hand tool claims 2017-2021



Non powered hand tool injuries 2017-2021



Examples of WSBC hand tool injury reports

Cutting cardboard, knife slipped and cut finger.

Worker was stripping cable with a knife & developed cramping in wrist.

Worker was using a wrench to loosen a nut. It slipped off and hit the worker's lip.

Worker was trying to loosen a bolt and slid a metal pipe over the wrench to make the handle longer. Worker hit wrench with a hammer. Pipe flew up and struck worker.



More examples...

Two workers were demolishing a small structure when one of the workers was inadvertently struck by a hammer. Possible concussion.

Worker was hunched over lifting approximately 20 lb. of compost with a small shovel. Worker felt pain in the back.

Worker was using a metal pry bar to remove a tire from rim when the bar slipped and struck forehead.



HAZARDS



Hazards: cutting tools and their sharp objects



Hazard: striking tools



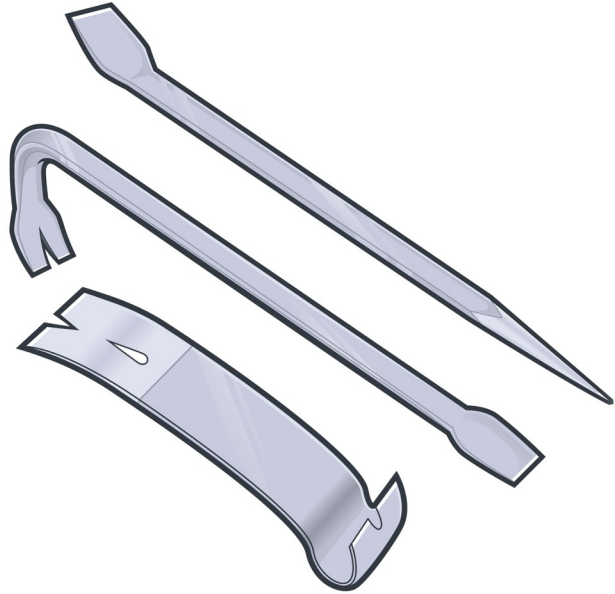
Hazards: pinching tools



Hazard: pulling tools



Hazard: lifting and prying tools



Hazard: fastening tools



Call to action/next steps

NEXT>>>
STEPS

- Training
- Inspect the tool before use
- Follow manufacturer's instructions
- Stay out of the line of fire/body position
- Wear PPE
- Ergonomics

Training



- Use manufacturer's instructions or develop Safe Work Procedures (SWP) for use of hand tools
- Hand Tools Institute [manual](#) is a great resource
- Have workers demonstrate correct use of the tools

Steps to load a stapler

1. Identify the components of a stapler.
2. Identify the type of staples this stapler uses.
3. Remove the staple pusher assembly.
4. Ensure the stapler is cleared of staples that may cause a jam.
5. Select the right type of staples and orientate them correctly.
6. Insert the staples.
7. Insert the staple pusher assembly and lock into place.



Inspect the tool before use

- Regularly inspect all tools to prevent the development of unsafe working conditions. See OHSR 3.5
- Tag out defective tools and tell your supervisor. See OHSR 4.3 (3)



Follow manufacturer's instructions



- Use the right tool, for the right job
- Follow manufacturer's instructions for the installation, inspection, testing, repair and maintenance of any tool
- Keep the manufacturer's instructions (owners manual) handy for workers to access

Stay out of the line of fire



Line of fire is a term that refers to when workers place themselves in harm's way by virtue of the type of work they perform.



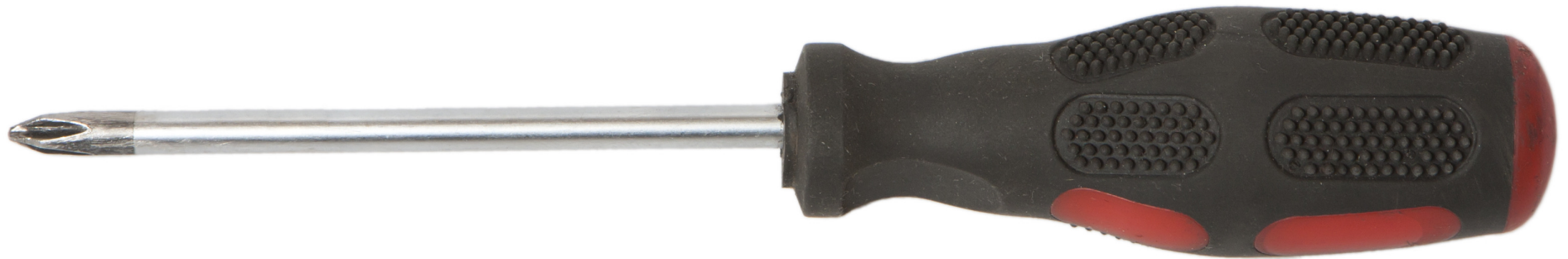
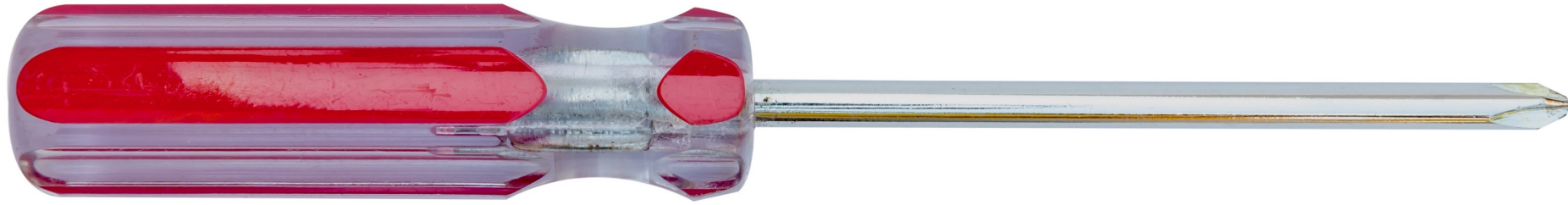
Wear Personal Protective Equipment (PPE)



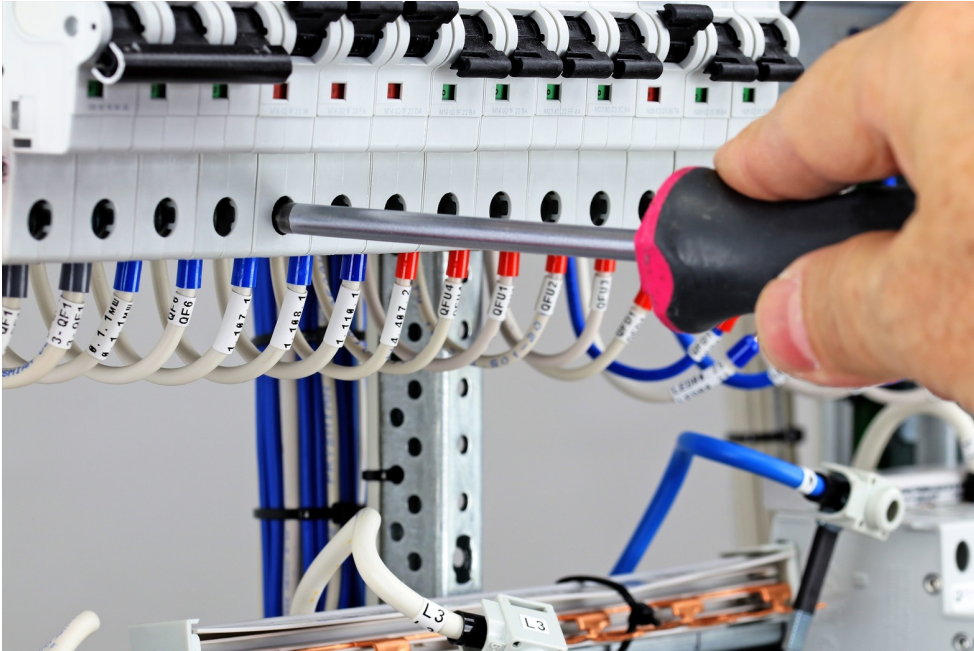
Evolution of hand tools – ergonomics grips



Ergonomic grips



Ergonomics - tool and job application



Q & A

MIS
MAKE IT SAFE

THANK YOU

For more information, please contact:

Lorne Davies

Manufacturing Safety Alliance BC

✉ l.davies@safetyalliancebc.ca

☎ 604.997.4479

