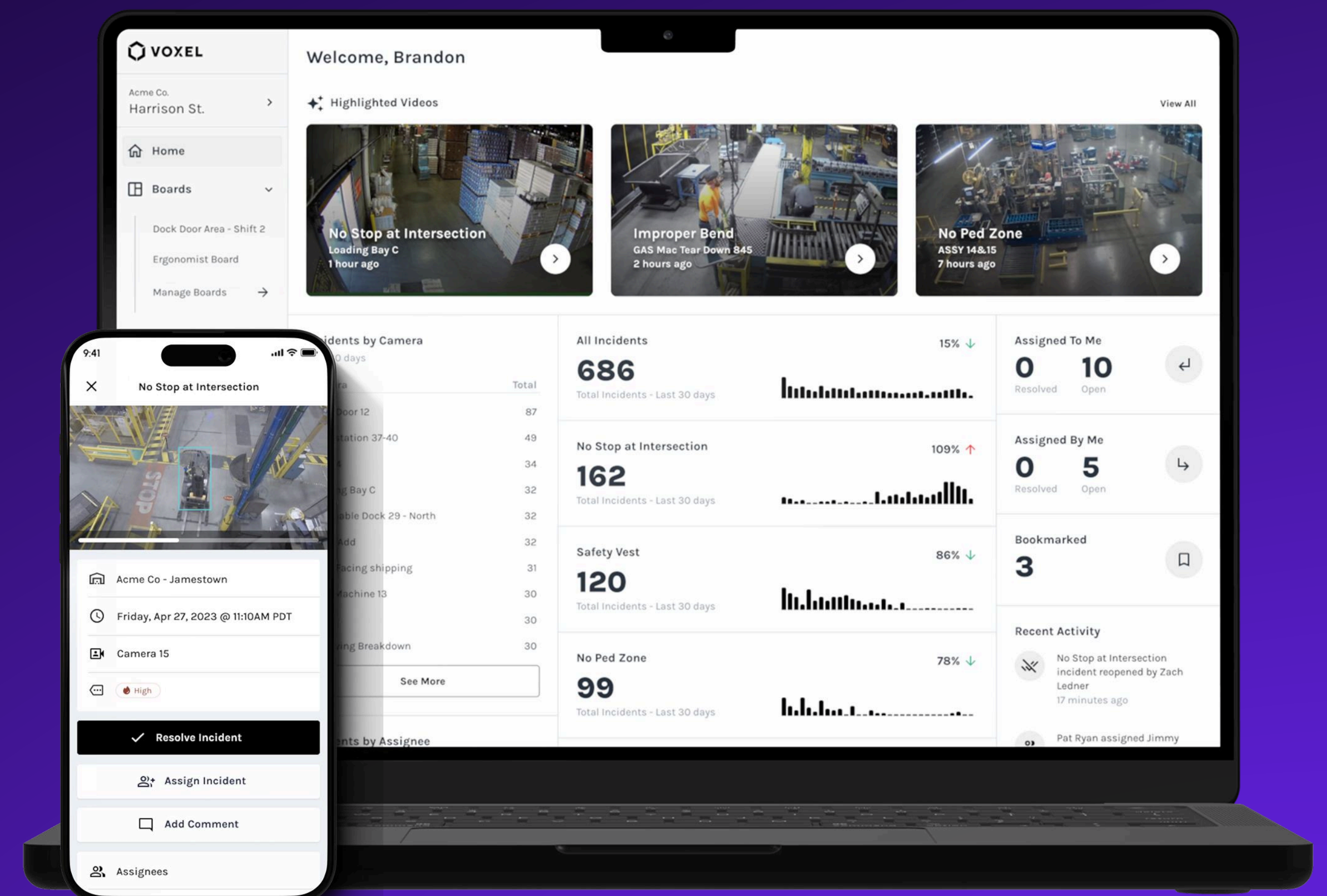




# See the Risk Before It Becomes an Incident.

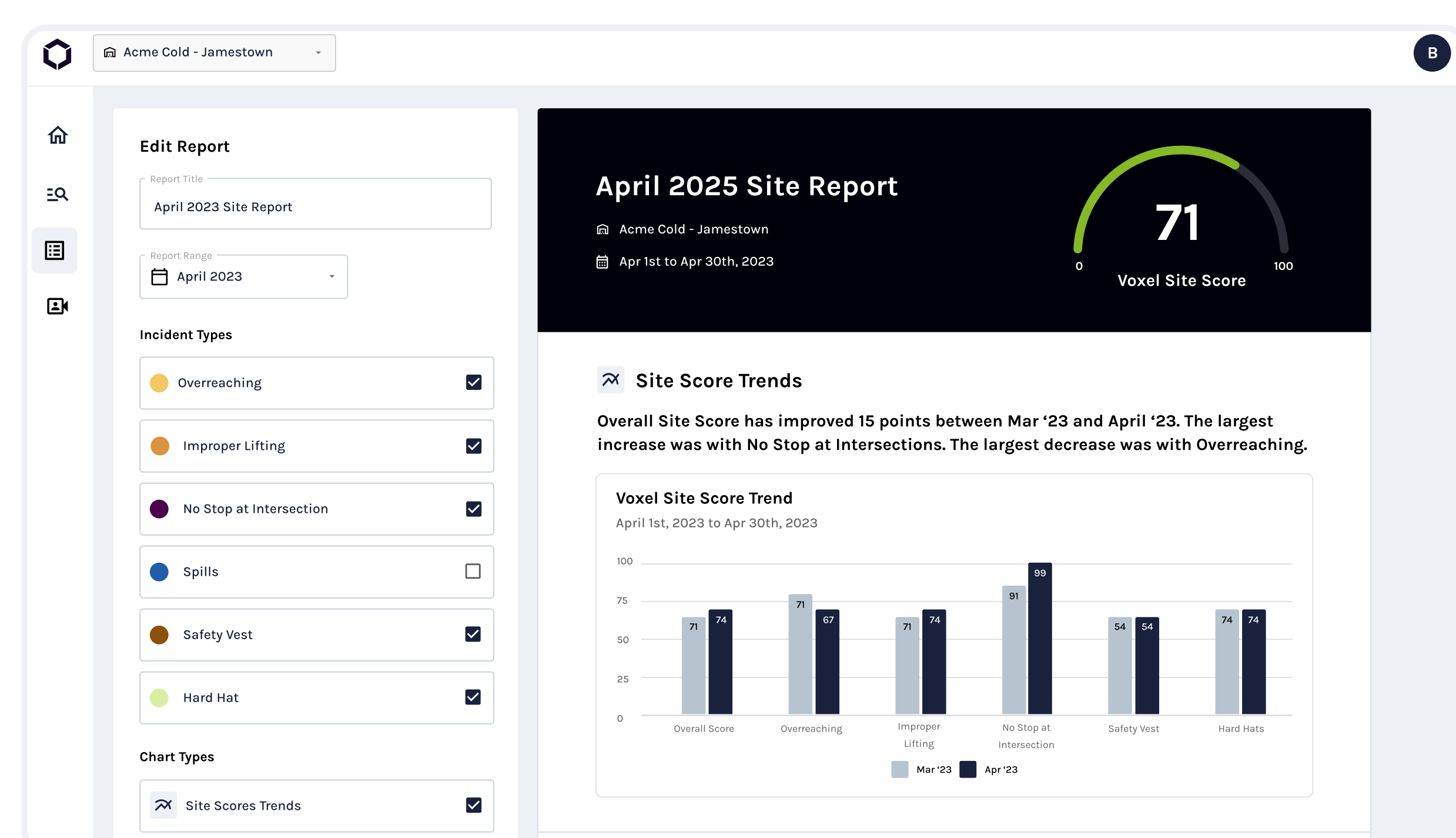
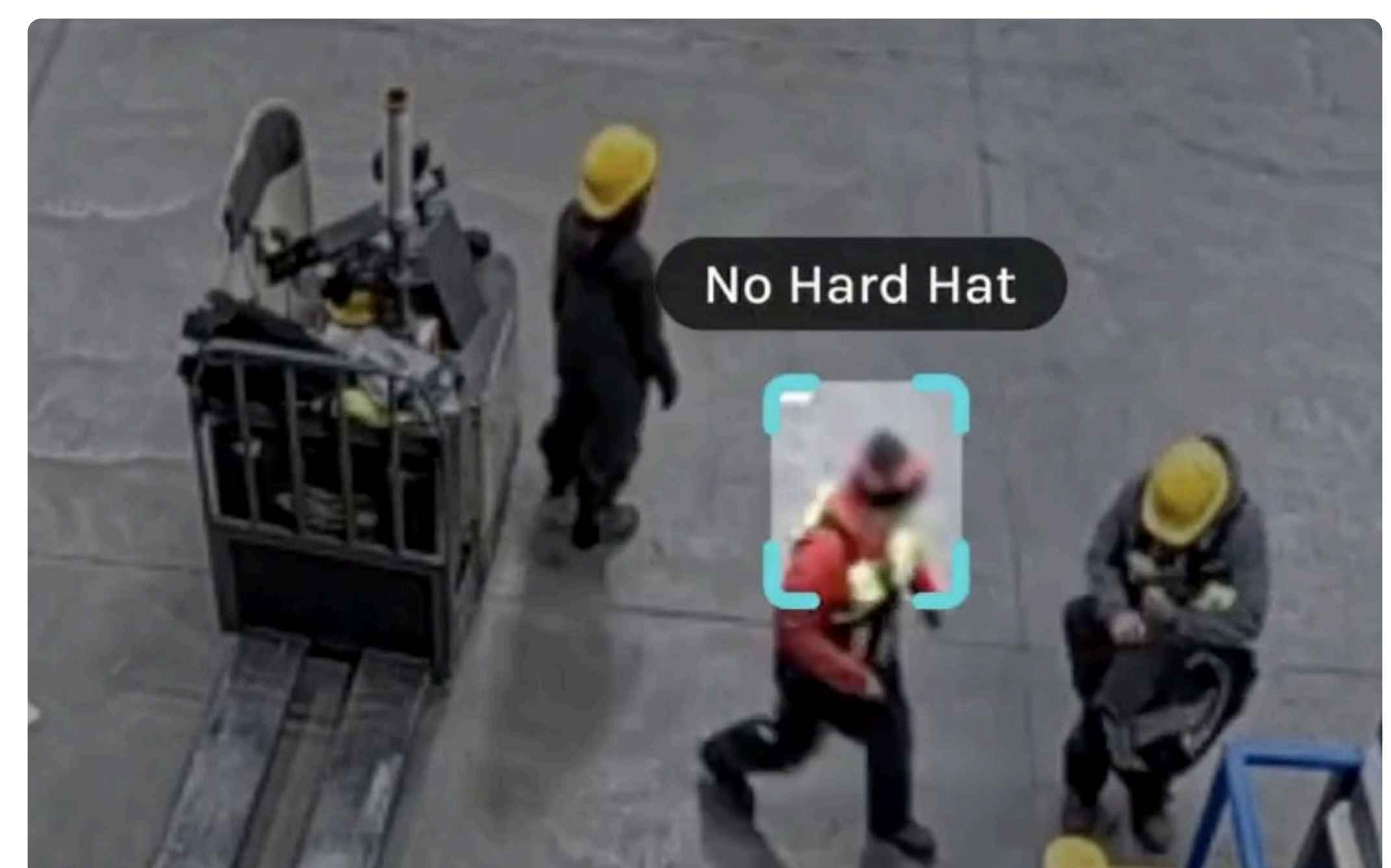
AI-powered insights that prevent injuries and protect your workforce.



## See the unseen

Voxel utilizes your existing security cameras and AI to spot and prioritize risks in real-time.

- Ergonomics**
  - Forward Bending
  - Overreaching
  - REBA Eval Tools
- PPE**
  - Hard Hats
  - Safety Vest
  - Bump Caps
  - Hairnets
- Vehicle Safety**
  - Speeding Violations
  - Stop at Intersection
  - PIT & PED Proximity
- Area Controls**
  - Liquid Spills
  - No PED Zones
  - Obstructions
  - Under Suspended Load
  - Machine Hazard Zones
- Operations**
  - Open Door Duration
  - Parking Durations
  - Blocked Aisles / Exits

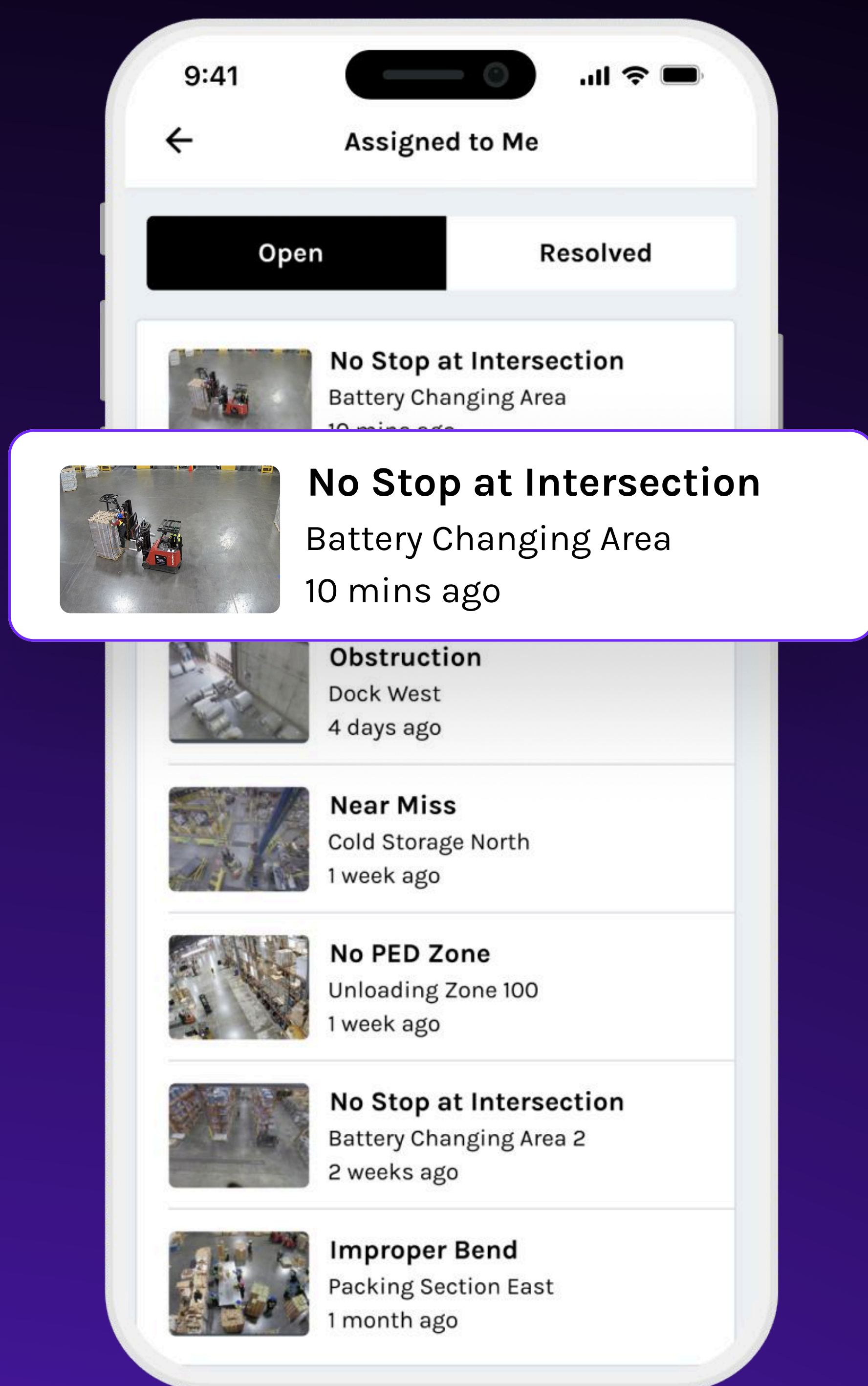


## Make strategic decisions

Develop smart, preventive measures with actionable analytics.

- ✓ Heat Maps
- ✓ Impact Boards
- ✓ Drill Down Reports





## Quickly take action

Spark safe behaviors with fast, focused, collaborative tools.

- ✓ Mobile App
- ✓ Smart Alerts
- ✓ Task Assignments

## Effortlessly balance safety and profitability

Voxel customers have seen:

↓ **66%**

Reduction in WC claims

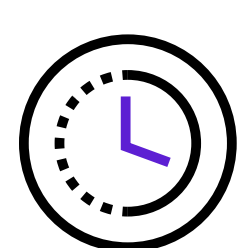
↓ **80%**

Reduction in lost time

↑ **18%**

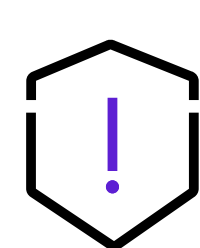
Increase in talent retention

## Deploy quickly, safely and securely



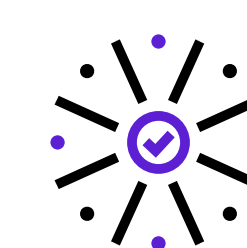
### Deployments in Days

Voxel connects to any existing security cameras, live within 48 hours of install.



### Privacy-Centric

No facial recognition or identification. Facial and body blurring available.



### Secure by Design

SOC-2 Type II certified, full end-to-end encryption, and hardened cloud infrastructure.

Start your journey to a safer workforce.